



www.inroad.eu



info@inroad.eu



[@InRoadproject](https://www.facebook.com/InRoadproject)



[@InRoad_Project](https://twitter.com/InRoad_Project)



[InRoad](https://www.linkedin.com/company/InRoad)

Project Presentation

Purpose, Aims, Achievements and Opportunities for Collaboration





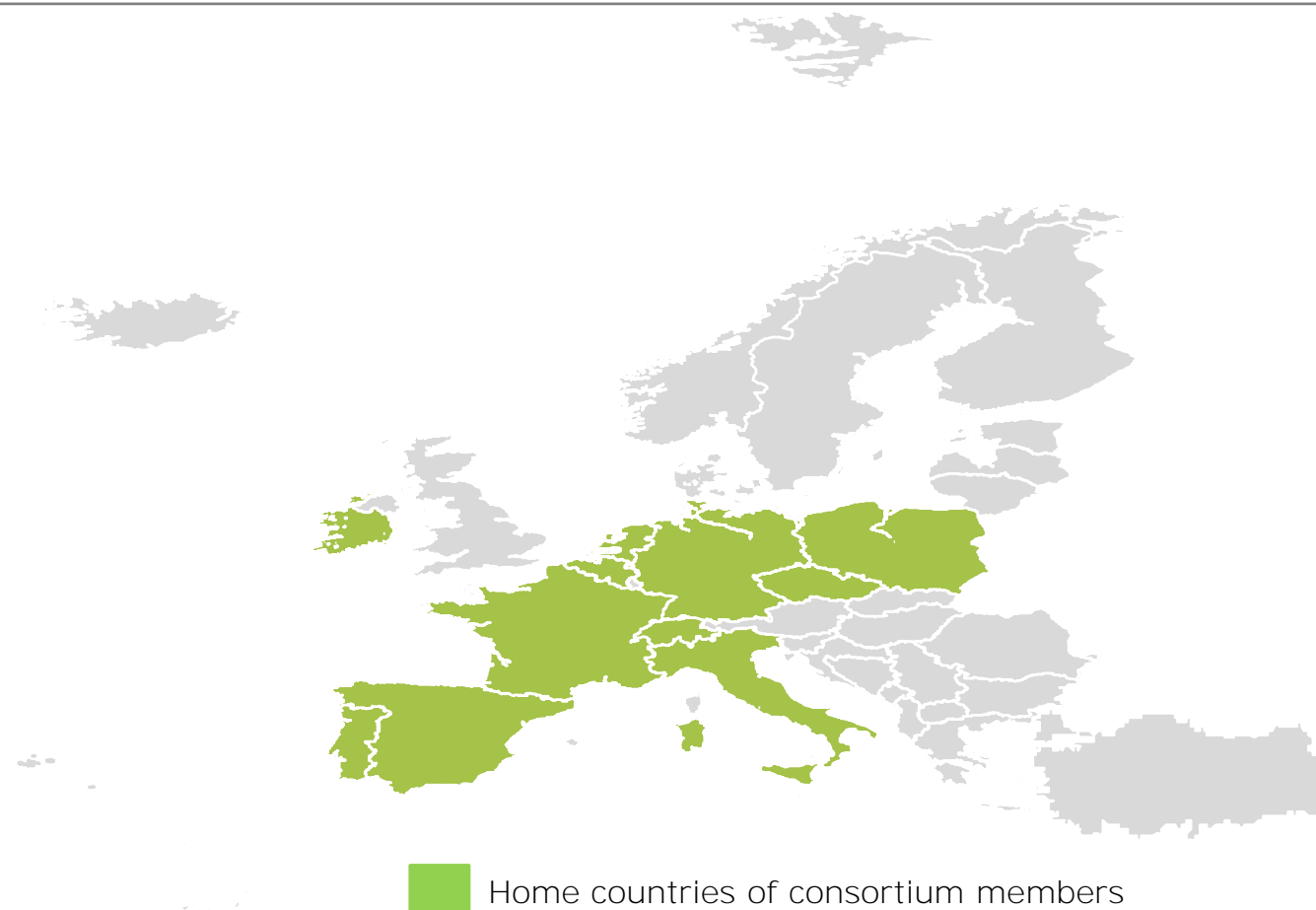
InRoad synchronising research infrastructure
roadmapping in Europe

Content

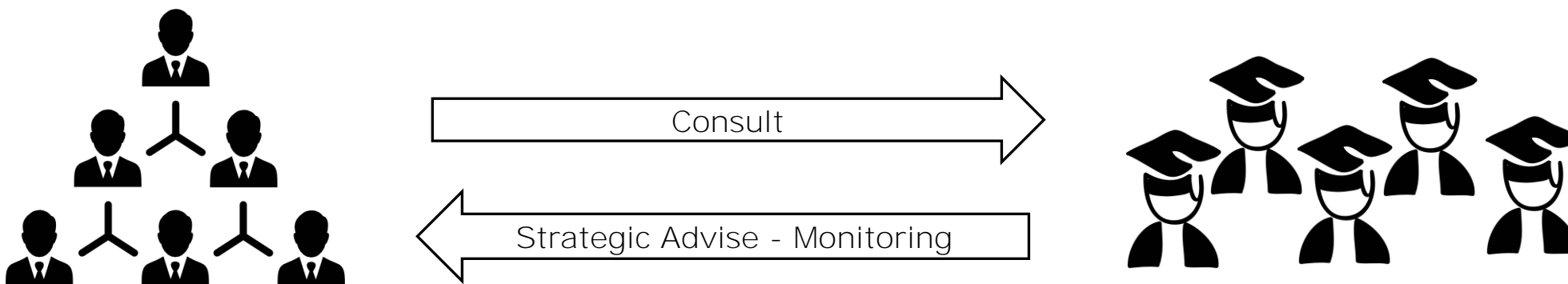
- Organisational Structure
- Specific activities and objectives
- Project Logical Framework
- Deliverables, Achievements and Milestones
- Outlook
- Synergy and collaboration opportunities

The Consortium

	Schweizerischer Nationalfonds zur Förderung der Wissenschaftlichen Forschung (SNSF), SWITZERLAND – coordinator
	Deutsches Zentrum fuer Luft – Und Raumfahrt Ev (DL), GERMANY
	Sociedad para el Fomento de la Innovacion Tecnologica S.L. (Innovatec), SPAIN
	Hermann von Helmholtz-Gemeinschaft Deutscher Forschungszentren EV (HGF), GERMANY
	Nederlandse Organisatie voor Wetenschappelijk Onderzoek (NWO), THE NETHERLANDS
	Comissao de Coordenacao e Desenvolvimento Regional do Centro (CCDRCC), PORTUGAL
	Ustav Fyzikalni Chemie J. Heyrovského Av Cr, v. v. i. (HIPC), CZECH REPUBLIC
	Service Public Federal de Programmation Politique Scientifique (BELSPO), BELGIUM
	Centre National de la Recherche Scientifique (CNRS), FRANCE
	Consiglio Nazionale delle Ricerche (CNR), ITALY
	Science Foundation Ireland (SFI), IRELAND
	Universite de Lausanne (UNIL), SWITZERLAND
	Wroclawskie Centrum Badan EIT+ Sp z o.o (EIT+), POLAND



Organisational Structure (1)



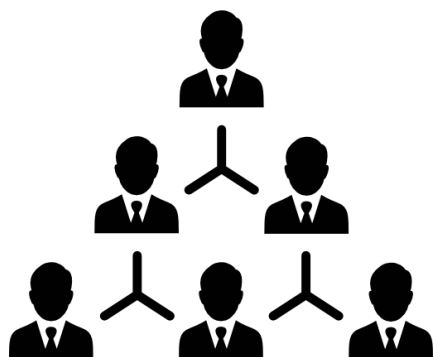
Consortium

- **RFO:**
SNSF (Coordinator, CH), NWO (NL), SFI (IE)
- **RPO:**
CNRS (FR), HGF (DE), CNR (IT), EIT+ (PL),
- **Policy-makers:**
DLR (DE), BELSPO (BE), HIPC (CZ)
- **Others:**
CCRDC (PT), UNIL (CH), Innovatec (ES)

Advisory Board

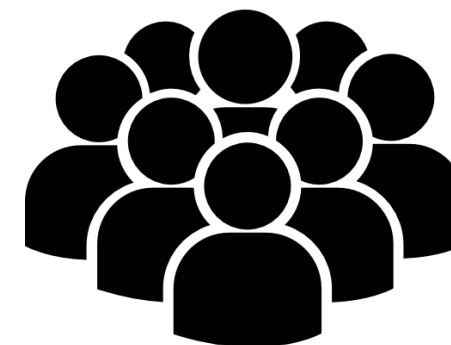
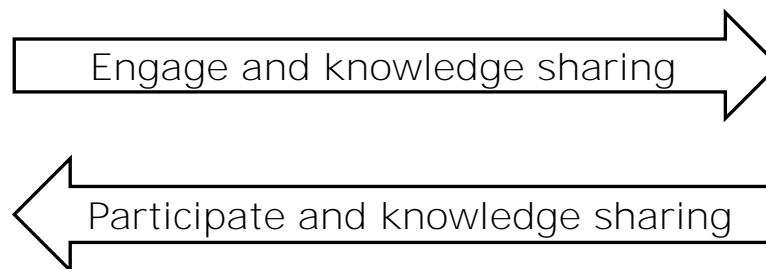
- Peter Fletcher (UK)
- Milena Zic Fuchs (HR)
- Ralph Eichler (CH)
- Beatrix Vierkorn – Rudolph (DE)
- Maria Faury (FR)
- Carlo Rizzuto (IT)
- Ana Proykova (BG)

Organisational Structure (2)



Consortium

- **RFO:**
SNSF (Coordinator, CH), NWO (NL), SFI (IE)
- **RPO:**
CNRS (FR), HGF (DE), CNR (IT), EIT+ (PL),
- **Policy-makers:**
- DLR (DE), BELSPO (BE), HIPC (CZ)
- **Others:**
CCRDC (PT), UNIL (CH), Innovatec (ES)



Reflection Group

- ESFRI, e-IRG, Science Europe
- National authorities
- RFO
- Operators

Specific Objectives and Activities



Develop **common definitions** and **methodological frameworks**, considering the **full lifecycle of RIs**.



Undertake a **consultation** and **hold validation workshops** in order to extract and analyse the practices at regional, national and European level and to **identify best practices in national RI roadmapping**.



Conduct **in-depth case studies** with selected RI in order to examine the usage of different funding instruments at regional, national and European levels.



Develop **good practices for efficient business models** in order to improve sustainability of RIs and to foster the exchange of best practices among policy makers, funders and operators.



Organise workshops with the relevant stakeholders on the above mentioned issues by the interaction with the reflection group.

INROAD LOGICAL FRAMEWORK

SPECIFIC CHALLENGE

THERE IS A CLEAR NEED TO IMPROVE THE COMPARABILITY AND SYNCHRONISATION OF RESEARCH INFRASTRUCTURE PRIORITY-SETTING PROCEDURES AND TO ADVANCE TOWARDS BETTER APPROACHES FOR THE FUNDING, LIFECYCLE MANAGEMENT AND EVALUATION AND MONITORING MECHANISMS OF THE RESEARCH INFRASTRUCTURES IN EUROPE

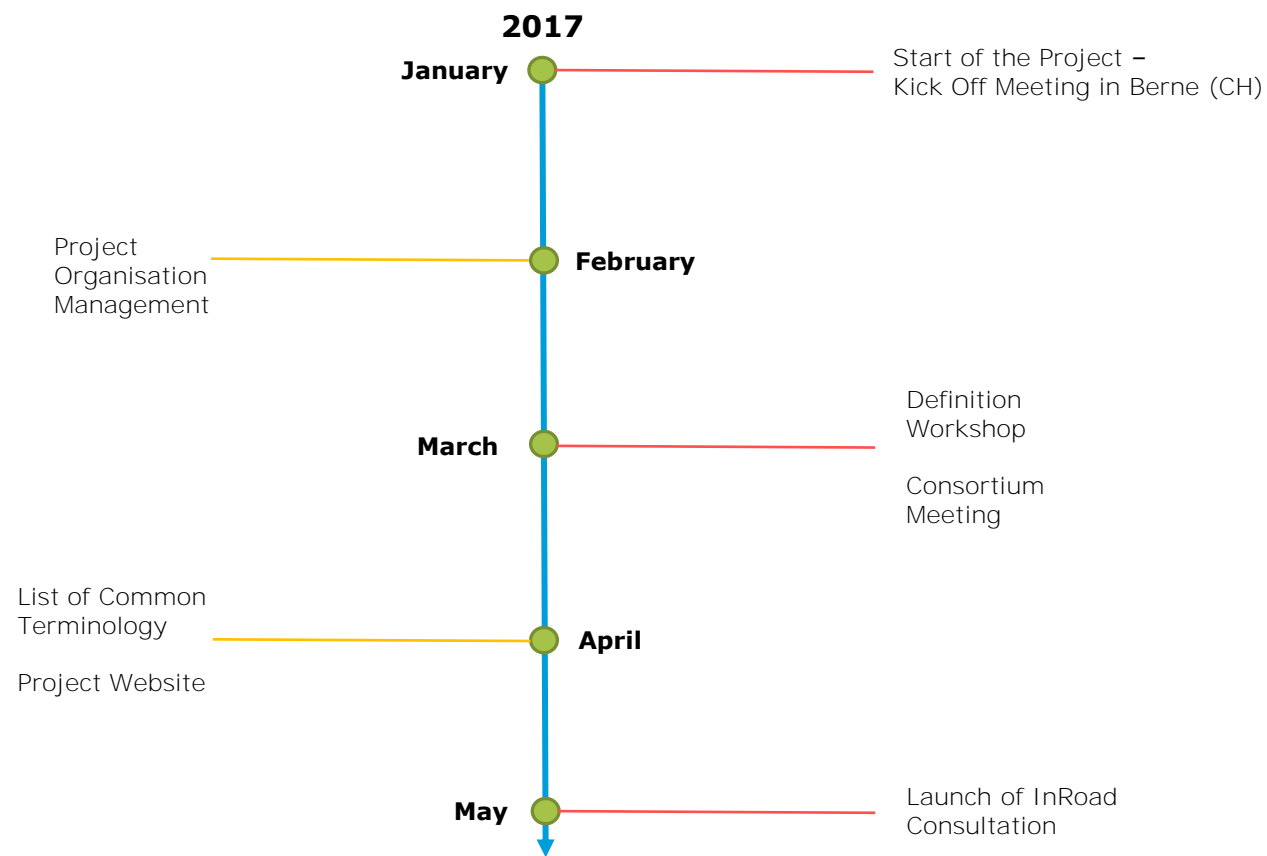
PROJECT GOAL

TO CONTRIBUTE TO A BETTER HARMONISATION AND SYNCHRONISATION OF PRIORITY-SETTING, FUNDING, EVALUATION MECHANISMS AND LIFECYCLE MANAGEMENT OF RESEARCH INFRASTRUCTURES THROUGH THE EXCHANGE OF BEST PRACTICES AMONG THE MAIN STAKEHOLDERS IN EU MEMBER STATES, ASSOCIATED COUNTRIES AND AT EUROPEAN LEVEL

PROJECT DURATION

INPUTS	ACTIVITIES (WPs)	OUTPUTS (direct results)	IMPACTS	
H2020 Grant Partners Knowledge, technical capacity & networks	WP1: Project management and coordination	<ul style="list-style-type: none"> • Project manual & quality assurance plan • Project meeting reports 	<ul style="list-style-type: none"> • Facilitate the exchange of experiences and good practices between the national and/or regional policies and programmes • Promote the development of appropriate evaluation and monitoring tools for decision making • Contribute to capacity building and research infrastructures human capital development in targeted/relevant regions • Enhance partnerships between policy makers, funding bodies, academia and industry 	<ul style="list-style-type: none"> • Strengthen the development of a consistent and dynamic ERA policy for RI • Contribute to the emergence of sustainable approaches for the provision of cross-disciplinary research services • Encourage the pooling of resources between RI operators • Contribute to the development of a competitive high performance ERA in the global research environment • Enhance the role of the Union in international organisations and multilateral fora
	WP2: Dissemination, communication and stakeholder engagement	<ul style="list-style-type: none"> • Project website • Dissemination materials: flyer, policy briefs, etc. • Final conference 		
	WP3: National and European strategic priority setting and analysis of national RI roadmapping procedures	<ul style="list-style-type: none"> • National RI roadmapping procedures (NRIMP) analysis, including case studies • State of the art of methodologies for RI monitoring and evaluation in Europe • Best practices & common trends of NRIMP and RI evaluation including recommendations 		
	WP4: Synchronisation and interoperability of regional, national and European RI funding instruments	<ul style="list-style-type: none"> • Literature review & Fact sheets on RI funding mechanisms • Report from case studies and regional technical workshops • Recommendations on the synchronisation and interoperability of RI funding 		
	WP5: Business plan development for assessment of the RI sustainability	<ul style="list-style-type: none"> • Categorisation of facilities according to overall business/financial models • State-of-the-art elaboration of business plans by RI managers/owners • Best practices for business plan for RI, including recommendations 		

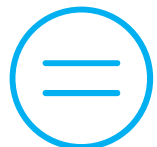
Deliverables and Achievements



Milestone (1): Definition Workshop



(1) **Inform about InRoad** and gather expectations, challenges and opportunities from the participants.



(2) **Reach a common understanding** on different concepts, models and definitions.



(3) **Validate InRoad consultation** that was released after the workshop.



(4) **Identify bottlenecks** that hamper the decision-making and coordination process for RIs of more than national relevance



InRoad Definition Workshop Group Picture (14.03.2017, BELSPO, Brussels):
66 Participants from 20 countries including Austria, Belgium, Bulgaria, Czech Republic, Denmark, Finland, France, Germany, Hungary, Ireland, Italy, Norway, the Netherlands, Poland, Portugal, Slovenia, Spain, Switzerland, Turkey and United Kingdom.

Milestone (2): InRoad Consultation

Consultation towards all 46 MS and AC.

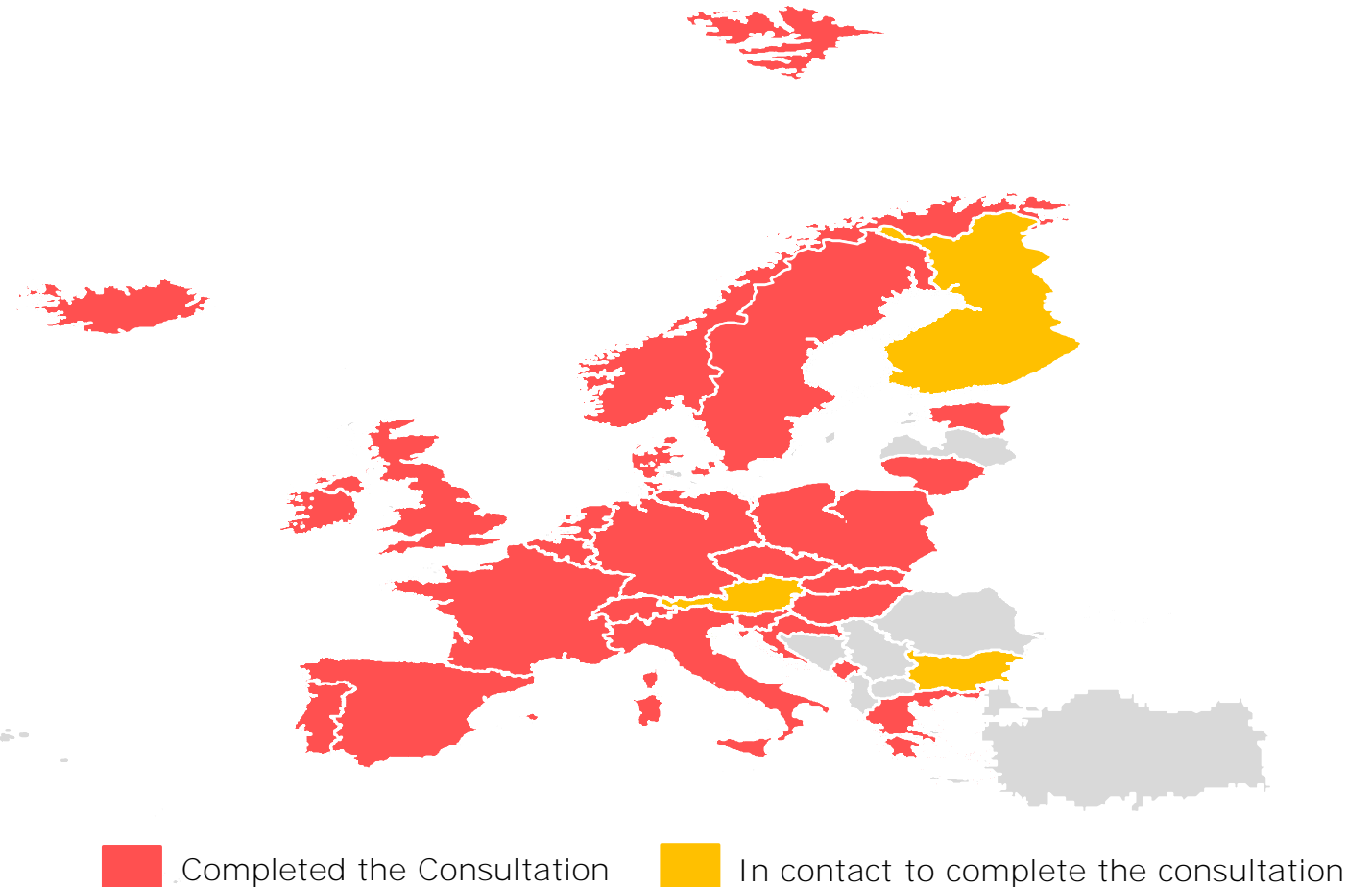
Target group: Responsible person for RI roadmaps

Questions about:

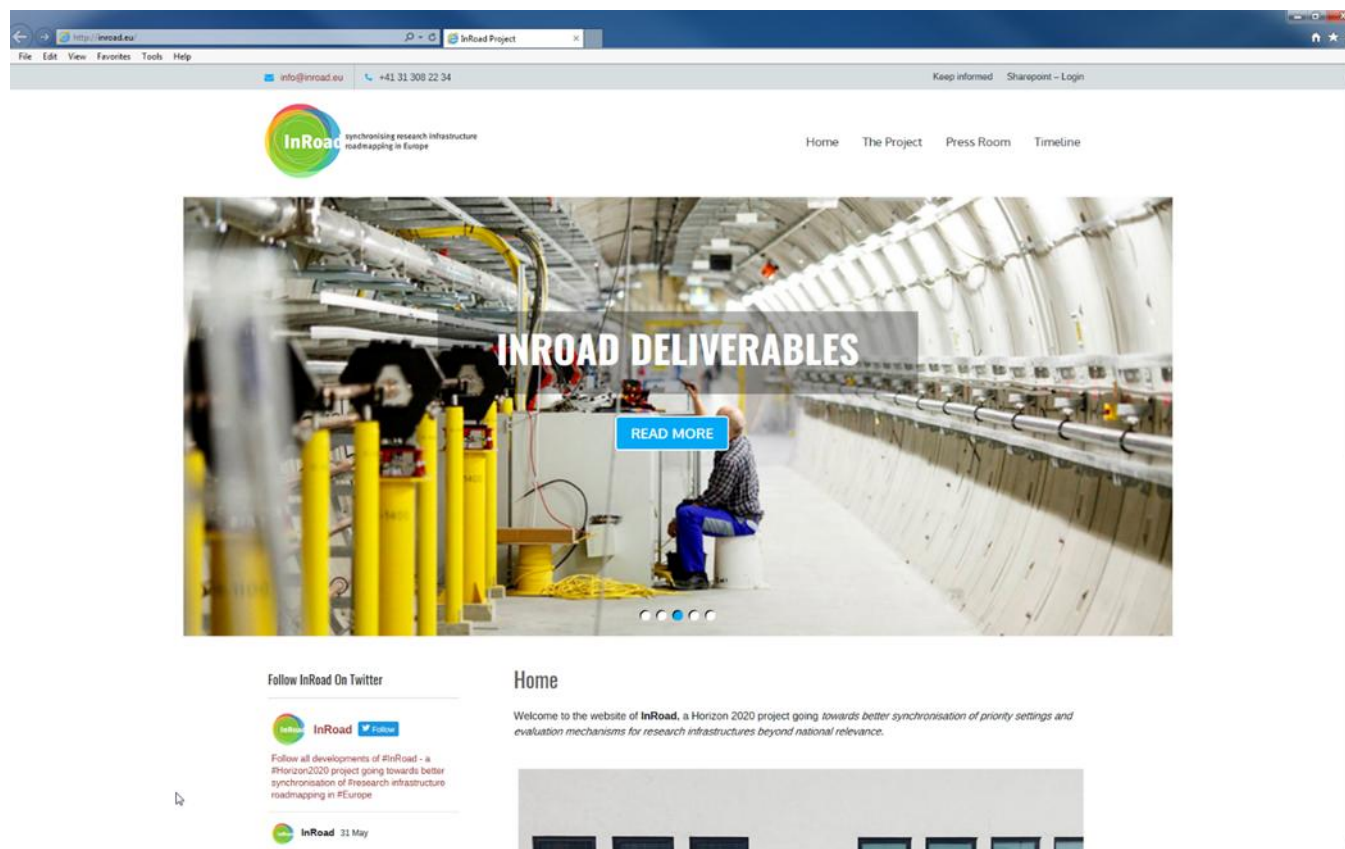
- (1) RI policies and decision making on RI
- (2) RI funding
- (3) Business plan for RI

Current status:

24 countries completed
3 countries in progress



Milestone (3): Website and SM Channels



www.inroad.eu



info@inroad.eu



[@InRoadproject](https://www.facebook.com/InRoadproject)

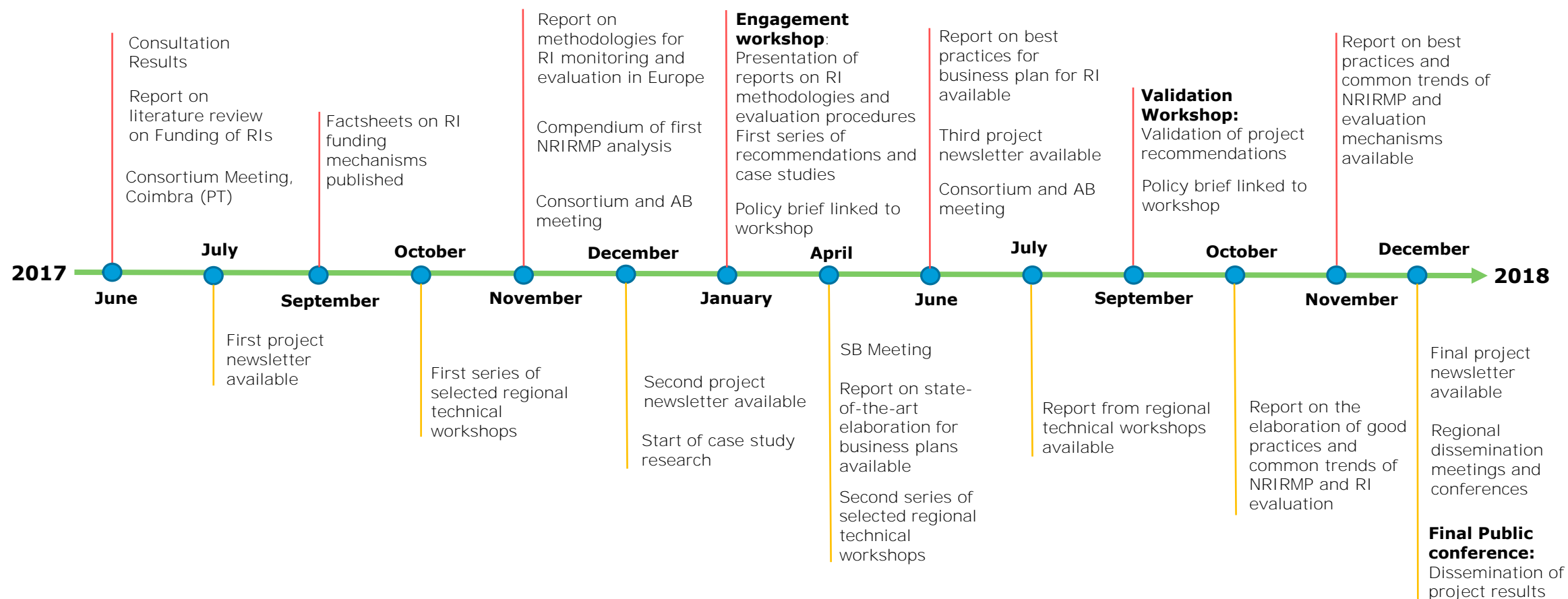


[@InRoad_Project](https://twitter.com/InRoad_Project)



[InRoad](https://www.linkedin.com/company/inroad)

Outlook: The (In)Road Ahead



Synergy and collaboration opportunities

- Exchange RI and related (e.g. R&I systems) **definitions** and **typologies**.
- Exchange **data collection methodologies**.
- **Share insights** about **management issues** of RI, which is for InRoad relevant to better understand the decision-making and evaluation / monitoring processes.
- **Share insights** about **foresight activities** and **landscaping**, which is for InRoad relevant to better understand the decision-making and priority-setting processes.
- Share **communication** methodologies, strategies and best-practices for the projects.



Thank you for your attention



www.inroad.eu



info@inroad.eu



[@InRoadproject](https://www.facebook.com/InRoadproject)



[@InRoad_Project](https://twitter.com/InRoad_Project)



[InRoad](https://www.linkedin.com/company/InRoad)



Coordinators' contact:
mueller@inroad.eu
deboer@inroad.eu