

## Main office in Portici

Director Silvano Fares



Address:  
P.le Enrico Fermi 1  
Loc. Porto del Granatello,  
Portici, Campania

Contact:  
Tel: +39 06 4993 27501  
segreteria.na@isafom.cnr.it

## Secondary office in Catania

Responsible Giuseppe Puglia



Address:  
Via Empedocle, 58 - 95128,  
Catania, Sicilia

Contact:  
Tel: +39 095.6139914  
segreteria.ct@isafom.cnr.it

## Secondary office in Rende

Responsible Sonia Vivona



Address:  
Via Cavour, 4/6 - 87036  
Rende, Cosenza, Calabria

Contact:  
Tel: +39 0984.841421  
segreteria.cs@isafom.cnr.it

## Secondary office in Perugia

Responsible Marina Bufacchi



Address:  
Via della Madonna Alta, 128  
Perugia, Umbria

Contact:  
Tel: +39 075.5014538  
segreteria.pg@isafom.cnr.it

## WHERE WE ARE

The headquarter is based in Portici (Naples), with three additional institute locations based in Perugia, Rende, and Catania.



# CNR - ISAFOM

Institute for Agriculture and Forestry  
Systems in the Mediterranean  
(CNR-ISAFOM)



Isafom



Isafom CNR



@isafomcnr

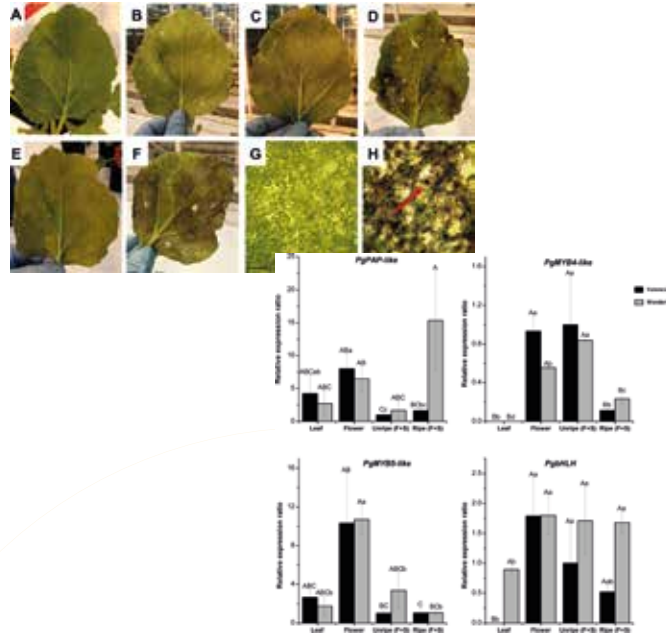


Consiglio Nazionale  
delle Ricerche

## ABOUT US

The Institute for Agriculture and Forestry Systems in the Mediterranean (ISAFoM) belongs to the Department of Biology, Agriculture and Food sciences of the National Research Council of Italy (CNR).

ISAFoM has a "critical mass" of 80 permanent employees, as well as research fellows, PhD students and other collaborators. ISAFoM hosts over 15 laboratories, 4 experimental farms for advances measuring and modelling activities.



## MISSION

Study and analysis of the physical, chemical and biological processes that determine the functioning and dynamics of agro-ecosystems in Mediterranean climate environments, for the qualitative and quantitative improvement of production, for the optimization of the use of natural resources, and for the enhancement of the functions of agricultural and forestry systems.

Development and application of research methods and advanced technological innovations for monitoring and forecasting the impacts and responses of agricultural and forest ecosystems to human and climatic pressures.

## WHAT WE DO

- Analysis of the response mechanisms of herbaceous crops, trees, forest formations and the rhizosphere to abiotic stress;
- Analysis of the territory's response to agricultural and forestry use, abiotic stresses, anthropic pressures and environmental changes;
- Development of solutions and techniques for the improvement of primary productivity, the total quality of the products and their post-harvest valorisation;
- Development of technical solutions at local level for the conservation and management of water resources, plant heritage and soil;
- Landscape Studies (mapping Ecosystem services, Forest therapy, historical landscapes).

