



#### Potenza Research Areas of National Council of Research

- Institute of Methodologies for Environmental Analysis
- Institute of Archeological Monumental Heritage

Tito Scalo centre (Potenza - Italy)  
C.da S. Loja - Zona Industriale,  
85050 Tito Scalo (PZ)

#### Contact details

International Center of Excellence (ICoE) of Potenza CNR IMAA  
Scientific Director

**Rosa Lasaponara**

[rosa.lasaponara@imaa.cnr.it](mailto:rosa.lasaponara@imaa.cnr.it)

<https://servforfire-era4cs.eu/>

tel. 0039 0971427214



**Earth Observation Integrated Approaches:  
Data and Science in support to Cultural Heritage**

**International Centers of Excellence (ICoE) of Potenza CNR IMAA**

**CAS - DBAR and CNR - IMAA and IBAM Initiative**





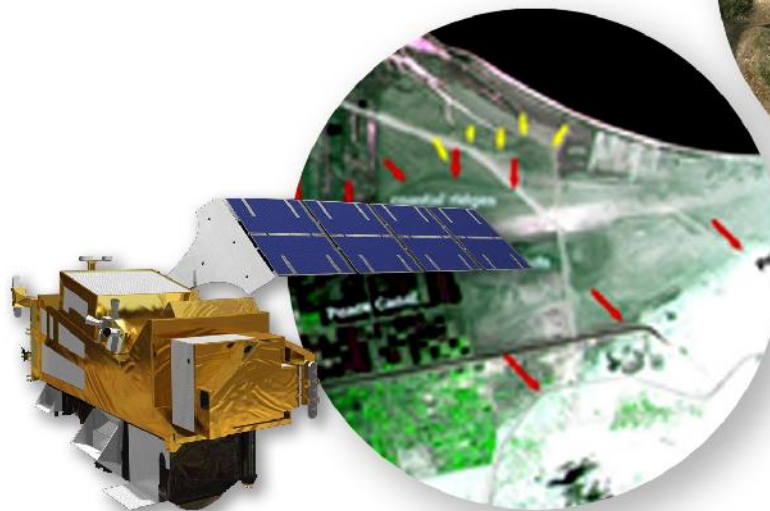
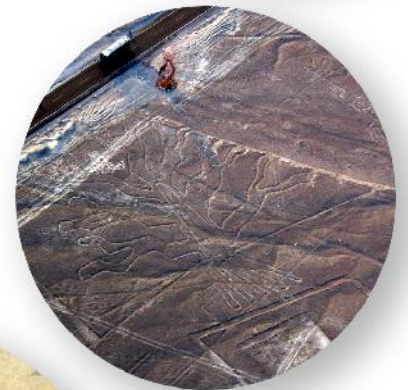
## Mission

The ICoE contributes at creating an international collaborative community of experts in Earth observation, Big data, ICT, Archaeological research, in support to Natural and Cultural Heritage, in order to:

- promote the use of Big earth observation data and information for natural and cultural Heritage preservation, monitoring and management;
- assess the effects of climate change, pollution, urban and rural development, looting, and conflict;
- to promote the use of Remote sensing as a key tool for archaeology and for studying human past and, human-environment interactions in ancient times;
- face Open challenges, from the extraction of relevant information to the integration of Satellite, aerial, UAV and in situ data sources;
- strengthen the science-policy-society nexus using a participatory approach, by improving already EO operational or experimentally tested applications.

## Overall plans:

- conduct research at local, regional, and global scale, focused on the use of EO and big earth data in support to Natural and Cultural Heritage;
- set up case studies and demonstration projects addressed to the preservation and valorisation of Cultural Heritage along the Silk Road and not only;
- foster specifically-designed cooperation on earth observation data and applications also involving policy and decision-making;
- contribute to Earth Observations researchers' network and platforms;



Scientific directors

*Rosa Lasaponara, Xinyuan Wang and Nicola Masini*