

Cross Border Exercises

Exercise Planning Conference



Co-funded by the
European Union

ESARC
Enhanced SAR Capacity



RED ROSES

RED ROSES PARTNERSHIP



RED ROSES

Coordinated by:



**FRENCH
RED CROSS**



Croce Rossa Italiana



Consiglio Nazionale
delle Ricerche



CNR - Istituto di
Geologia Ambientale
e Geingegneria



Géosciences pour une Terre durable

brgm

Dauphine | PSL 
UNIVERSITÉ PARIS

Introduction

Considering the overlapping of different UCPM-funded projects and other initiatives, it has been decided with the consortium to create a wider exercise, having interacting three projects:

- RED ROSES
- COVALEX a UCPM - Knowledge Network project
- ESARC (Emergency Satellite and Resilience Communications) an Italian Red Cross, British Red Cross and Jaguar Land Rover initiative)

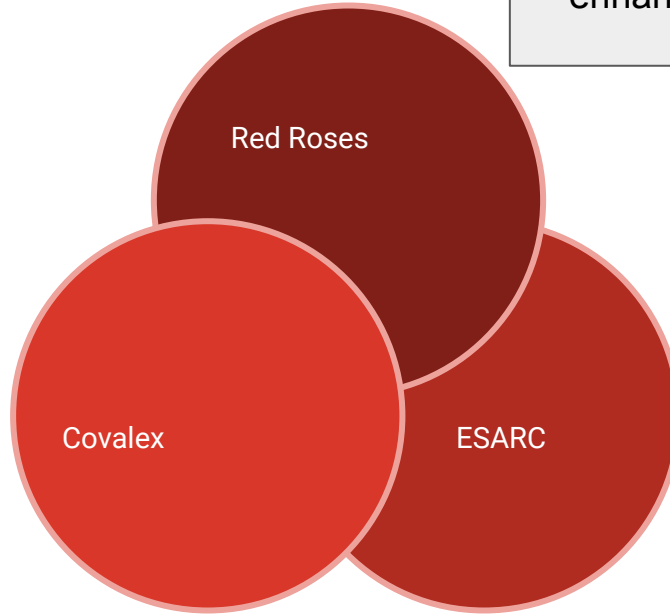


Co-funded by the
European Union



Introduction

A Knowledge Network project working on floods, forest fires and urban multi-hazard, aiming to analyse best practices and create community of practices



Prevention project, aiming to enhance risk analysis and risk awareness

A project focusing on enhancing Search and Rescue and Assessment capabilities, aiming to create strong assessment teams

Introduction

The exercise will compose different actions:

- two IFRC training courses (ENAP and HIAC) will support the definition of the Primary Target Audience.
- the audience is mixed: RCRC and CP personnel
- the EXCON is mixed: RCRC and CP personnel
- we would also like to test test Surge Coordination and Membership Coordination in Emergency
- The actors will be real counterparts or CRI and CRF teams



Co-funded by the
European Union



Introduction

The exercise will involve different actors:

- Real counterparts, as the Piedmont CP and the involved towns
- Simulated counterparts, if needed

The creation of small scenes, will also enhance the application of what has been shared during the training courses (e.g Monitoring)



Co-funded by the
European Union



Timeline



Co-funded by the
European Union

ESARC
Enhanced SAR Capacity

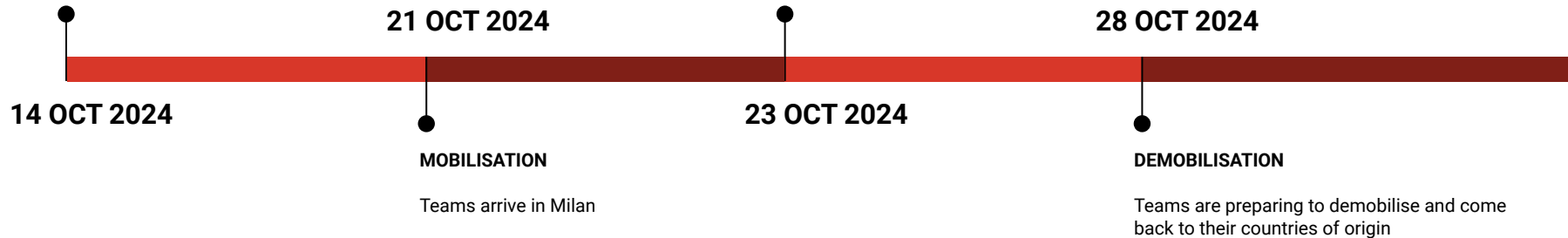
EXERCISE TIMELINE

EARLY WARNING

Initial alert and sharing of information and forecasts

OPERATIONS

Teams are Operating in the whole area



TRAINING TIMELINE

ONLINE COURSES

All the participants have to follow the IFRC online training courses, mandatory for the Surge personnel

OPERATIONS

Teams are following the training and apply the lessons learned through the exercise



Timeline

We expect to have participants arriving during the first two days, as well as leaving on October 28th or 29th



Co-funded by the
European Union

ESARC
Enhanced SAR Capacity

Scenario



Co-funded by the
European Union

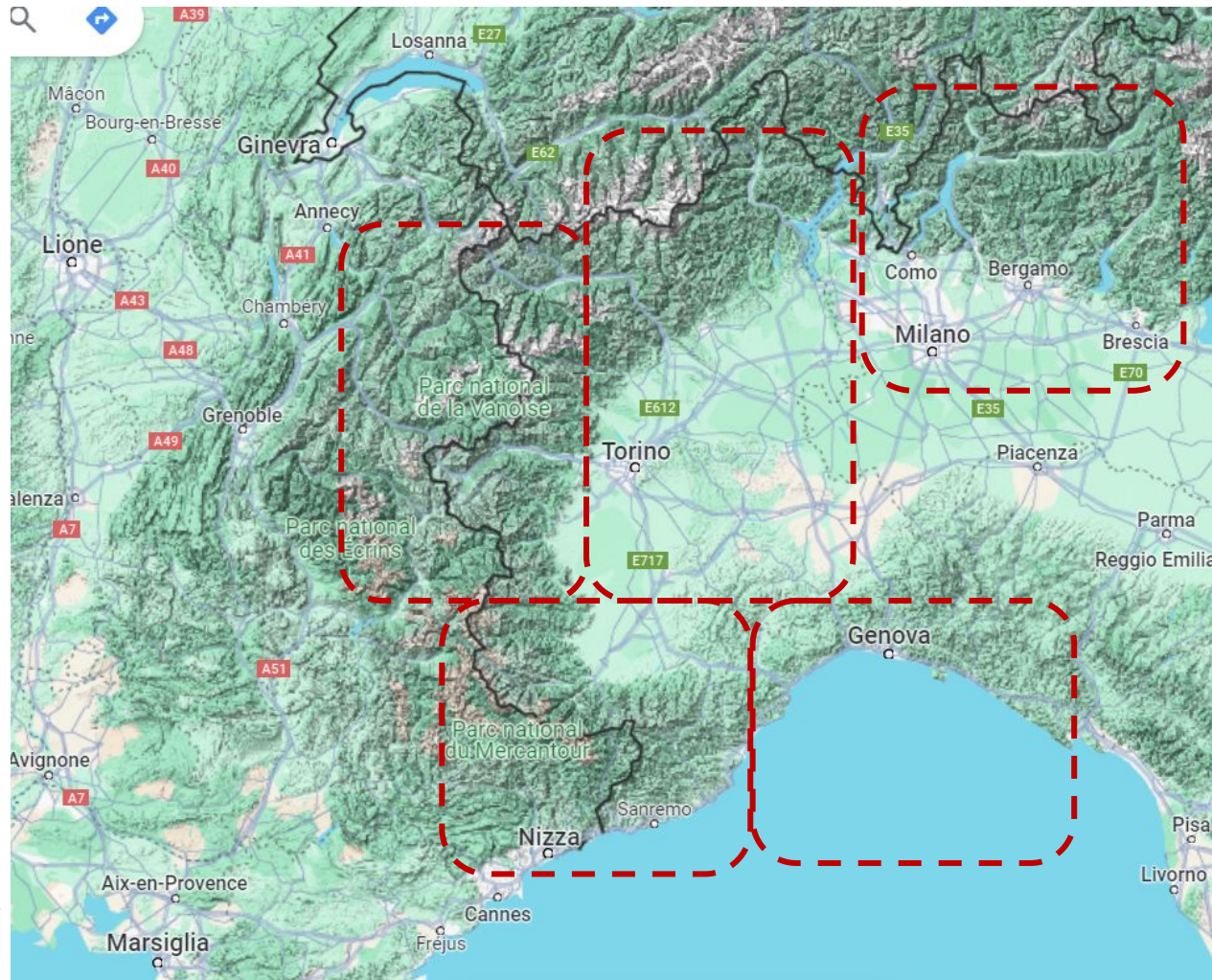
ESARC
Enhanced SAR Capacity



Co-funded by the
European Union

ESARC
Enhanced SAR Capacity

A Mediane, impacting on Cote d'Azur and Western Liguria, causes an hydromet emergency, composed by several floods, flash floods, hydrogeo events and damages in the whole Area of Operation (all the squares in the map).



Exercise Flow



Co-funded by the
European Union

ESARC
Enhanced SAR Capacity

EXERCISE

EARLY WARNING, EARLY ACTION (EWEA)

WARN
ING

LOCAL
EWEA

REGIONAL
EWEA

INTER-AGENCY
COORDINATION

SMALL REAL SCALE ACTIONS

VIP
Program

Observer

POST-MISSION

Lessons
Learnt
Workshop

MOBILISATION

OPERATIONS

DE
MOBILISATION

Analysis

Exchange
of
information

Monitoring

Regional
Partners
TTX

Debriefing &
Closure



Co-funded by the
European Union



Funded by the
European Union

ESARC

Enhanced SAR Capacity

Composition of 2 training courses

The Exercise is a composition of 2 training courses: ENAP and HIAC

The Trainees will compose assessment cells and a team in the IFRC EOC-H (Emergency Operations Coordination Hub), to test some part of the Membership Coordination in Emergencies

The IFRC will deploy Surge Coordination, as well as the EC is sending an EUCPT (played or real).



Co-funded by the
European Union

ESARC
Enhanced SAR Capacity

Objectives



Co-funded by the
European Union

ESARC

Enhanced SAR Capacity

TTX - RSX Objectives

- Recognize the difference between needs analysis, response analysis, situation analysis and response planning
- Structure a response options (ROA) analysis.
- Practice with VGI and SDI for analysis tool



Events



Co-funded by the
European Union



Master Event List

- Operational Period 1 (Early Warning)
 - Pre-training, through online messages
- Operational Period 2 (Mobilisation of teams)
 - Arrival, Meetings, Interaction with the NS and the CP system
- Operational Period 3 (Operations)
 - Dissemination of the teams and joint assessment
 - Situational Awareness and data integration and interpretation
- Operational Period 4 (Demobilisation)
- Cross-Cutting Elements

Good Practices

- Use of the Knowledge Network Oriented Exercise Management Guidelines to organise the exercise, design the scenario, define roles, and test innovations
- Multi-stakeholders approach and exchange of perspectives
- Use of IBF in domestic/local activation
- Use of IBF to support international activation
- IFRC Assessment Procedures and integration with National procedures
- Coordinated support (mini application of HNS principles)
- Application of the IFRC Guidelines for Civil Protection Operations

Assets



Co-funded by the
European Union

ESARC
Enhanced SAR Capacity

Test

- # of assets deployed and coordinated
- SDI and GIS support with existing dataset
- Transboundary and international EOC coordination
- # of local areas to be tested and coordinated
- # of tools to be tested and integrated, including UAVs

Real Life Support

- logistics
- communication
- interactions (including legal permits)



Co-funded by the
European Union



EXCON



Co-funded by the
European Union

ESARC
Enhanced SAR Capacity

EXCON Organisation

- EXCON team
 - Exercise Director
 - Excon Manager
 - EXCON Team (Need names from CRF)
- Scene managers
 - To be planned
- Trainers / Coach
 - Need for at least 10 Trainers / Coach in total
- Evaluators
 - To be defined
- Real Life Support



Co-funded by the
European Union



EXCON Communication

- Injects management:
 - via virtualEXCON
 - with Radio
- Formal communications:
 - via email
 - Whatsapp group
- Informal communication
 - Telephone



Co-funded by the
European Union

ESARC

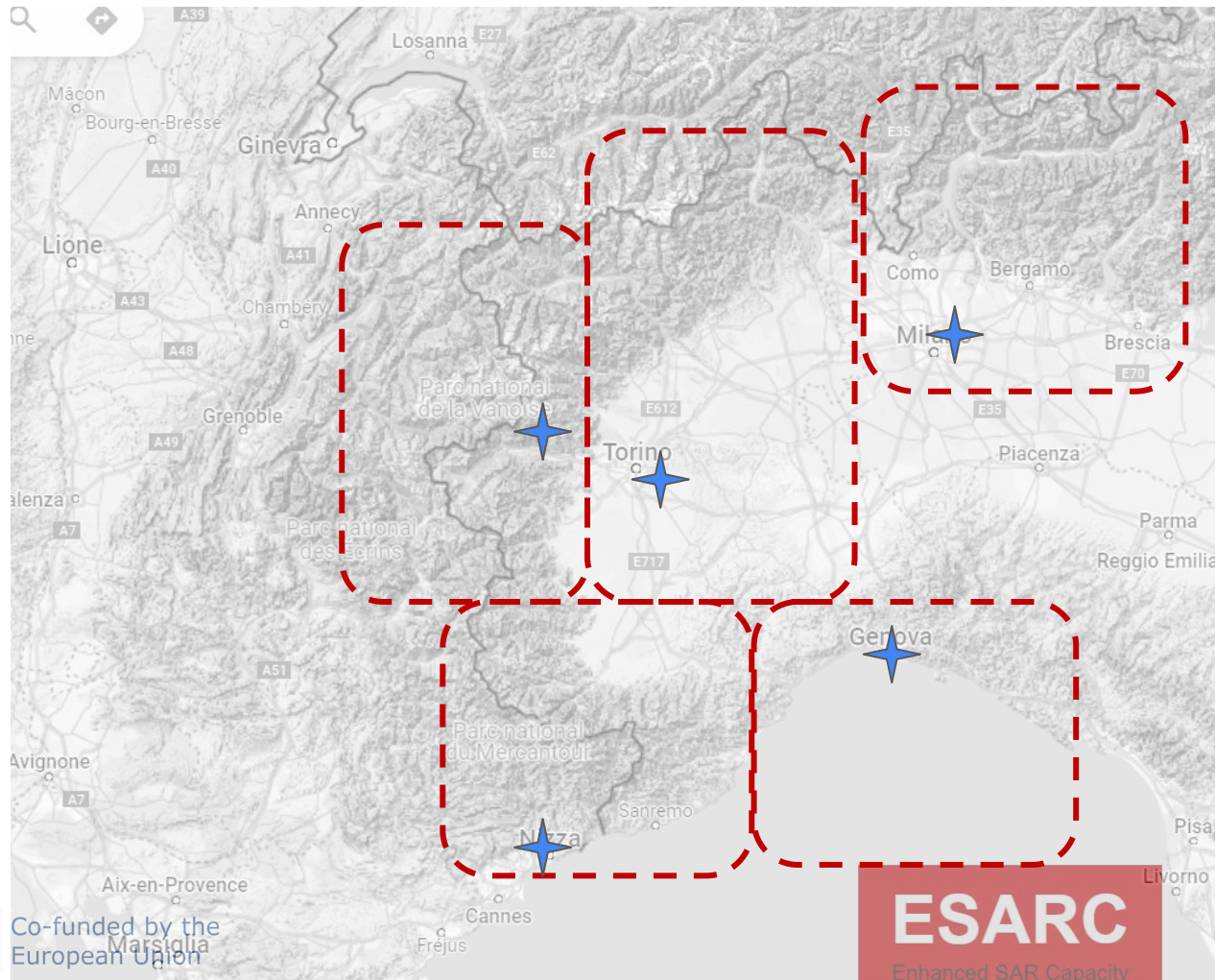
Enhanced SAR Capacity

EXCON will be disseminated, for supporting coordination.

- Main EXCON: Milan
- Bardonecchia EXCON: CRI Susa
- Roya Valley: Nice (?)
- Piedmont: Settimo Torinese
- Liguria: Genoa



Co-funded by the
European Union



Merçi, thanks, grazie



Co-funded by the
European Union

ESARC
Enhanced SAR Capacity